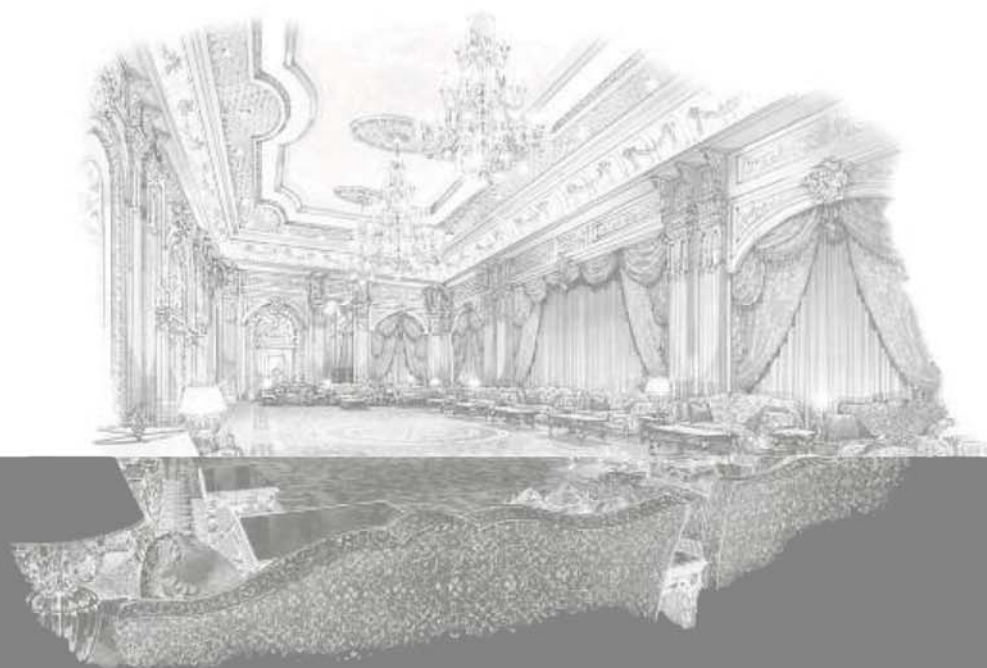


S P A Z I O

DESIGN & BUILD INTERNATIONAL

CONTENTS



- | | |
|------------|---------------------|
| PROFILE | ORGANIZATION CHARTS |
| LEADERSHIP | COMPANY RESOURCES |
| TEAM | PORTFOLIO |
| SERVICES | HEALTH & SAFETY |
| FACTORIES | CERTIFICATES |



SPAZIO... AND SPACE COMES ALIVE

PROFILE

INTERIOR DESIGN FOR THE HIGH-END SEGMENT

Spazio Design & Build International is an established Interior Design and Build firm based in Abu Dhabi, and providing turnkey Interior decoration and execution for luxurious and high-end palaces, villas, and offices. Over the years, we have built a rich portfolio of completed projects for prestigious clients.

Our team consists of skilled and dynamic professionals from different nationalities who have set a precedent in the Middle East and Gulf regions for the past 25 years.

Our aim is to deliver a high standard final product whilst endeavoring to meet client expectations in terms of quality, schedule and budget.



Where new ideas, advanced techniques, and the finest craftsmanship combine

PROFILE

MISSION

To delight our clients with outstanding design quality,
matched by superb materials, service, and project execution.

VISION

To be a centre for excellence in every aspect of our work,
setting the highest standards as measured by international benchmarks.

VALUES

We are driven by quality, originality and professionalism
in our commitment to exceeding our client's expectations.



LEADERSHIP

SPACE EXPLORER

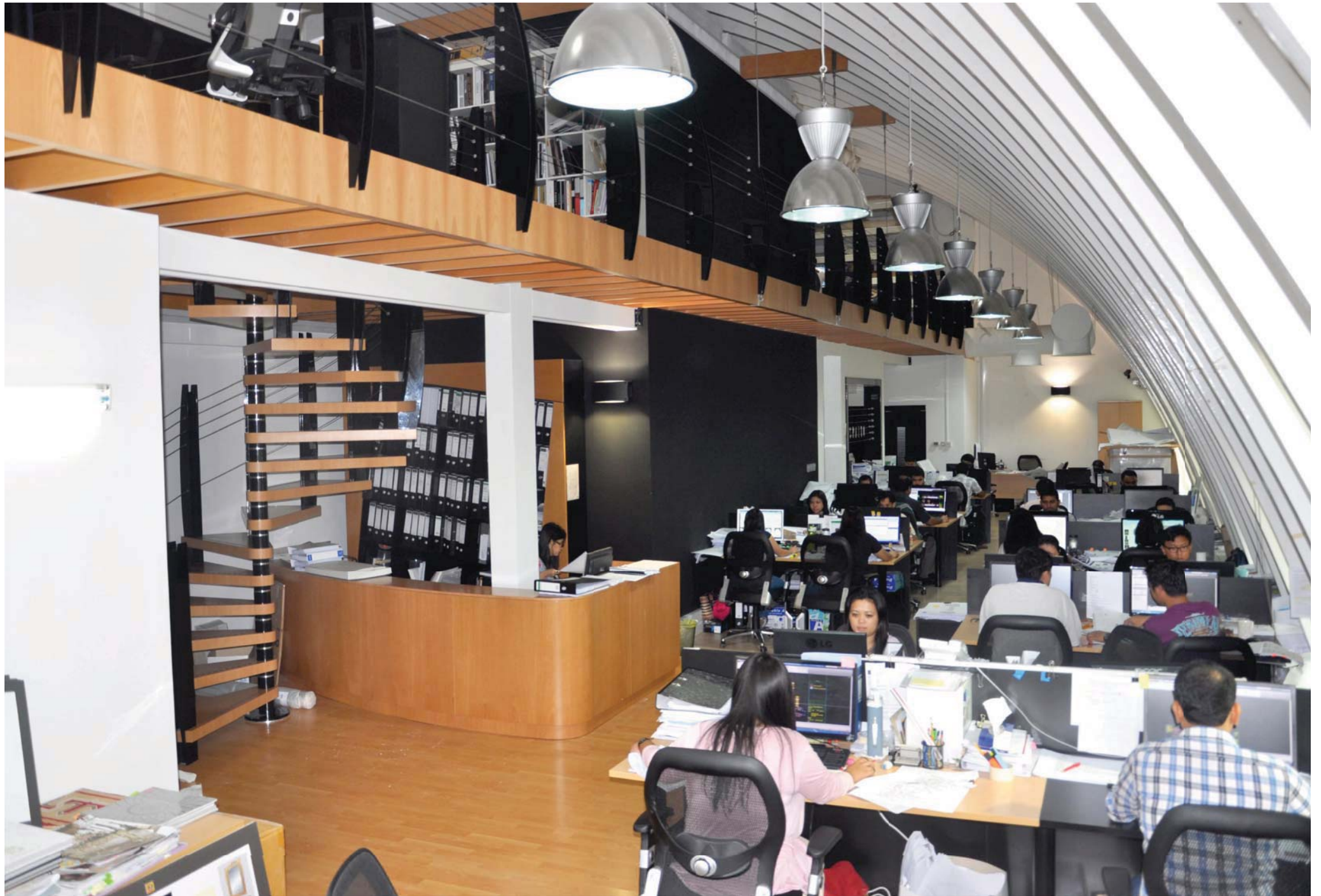


JOSEPH ILIOVITS | GENERAL MANAGER



Spazio was founded in 2006 by Joseph Iliovits and two partners sharing the same vision. Combining influence from his Greek-Lebanese heritage with formal training and master's qualifications in the USA, Mr. Iliovits epitomizes the diversity of talents and resources that Spazio makes available to clients. His ever-evolving career started in Europe and the USA where he gained valuable knowledge working with premier designers.

Backed by this extensive practical experience, he then moved to the Middle East where he contributed to upscale projects in Beirut among which was a five-star hotel in Solidere. To better serve a growing client base in the GCC countries, he then settled in Abu Dhabi where, together with his team, he has been completing private assignments for a roster of prestigious clients including royal families, government departments, elite property developers, and high net worth individuals.



TEAM

SPACE PLANNERS

Spazio's multi-cultural and multi-disciplinary team connects more than 50 experts drawn from around the world, with the expertise to create unique interiors, and bring original perspective to each assignment.

Whether involved in interior planning, interior decoration, graphic design, project management, execution or administration, our people are driven by passion and devotion to excellence. They are chosen for their capacity to understand and respond to client's needs, their excellent interpersonal skills, and their ability to implement our principle of "crafting spaces that reflect the personality of their occupants".





SERVICES

SPACE DISCOVERY AND MANAGEMENT



Spazio provides comprehensive design and build services, beginning with client briefing to occupation, through the conceptual design, execution and implementation. From royal palaces to beach villas, private homes to official reception rooms, we assume complete responsibility at each stage of the design and build process.

Our design process comprises a series of phases that start with an initial consultation aimed at discovering client's taste, and discussing their wishes.

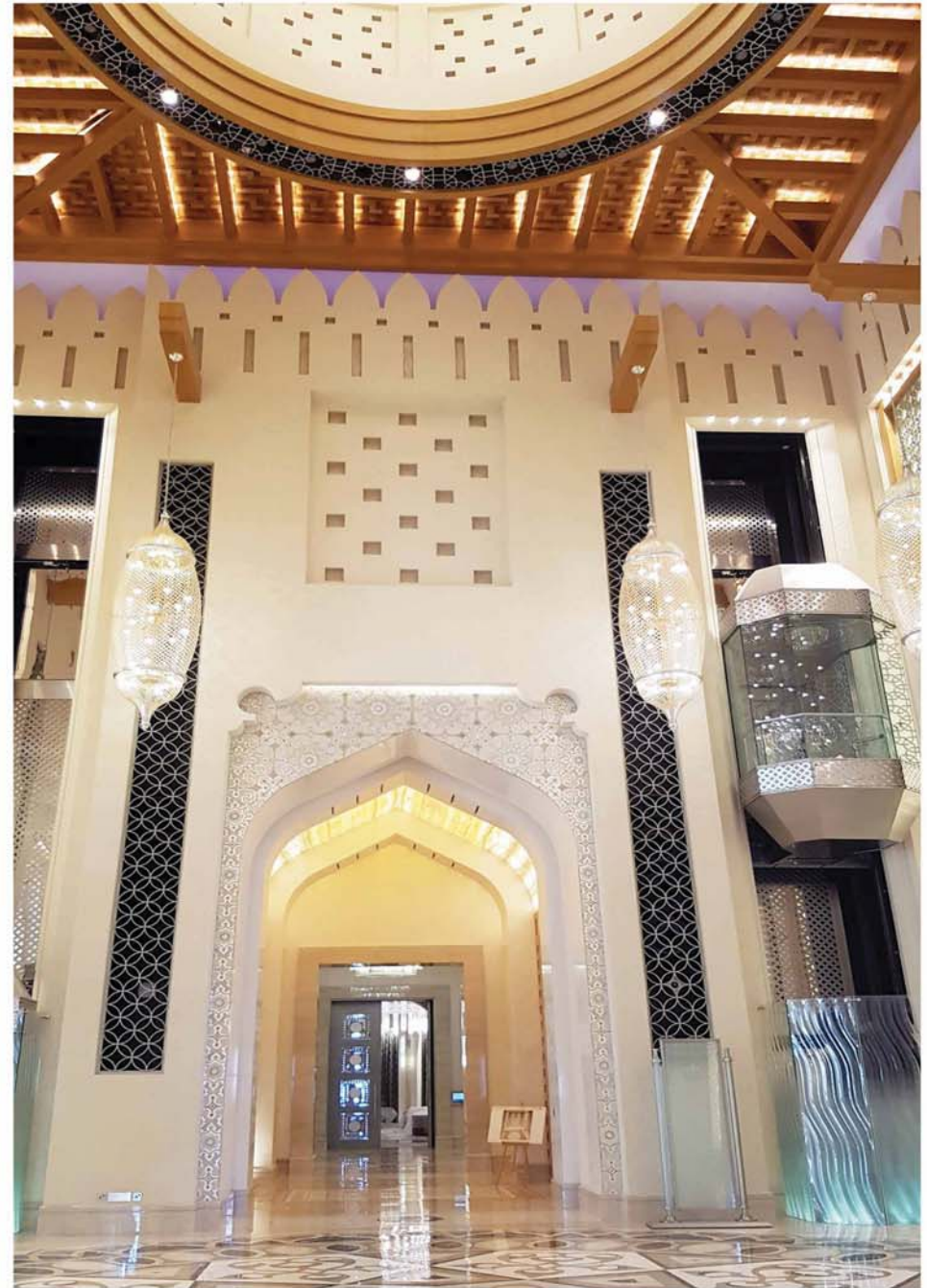
This preliminary meeting is followed by an exploration of the space to study, during which detailed and accurate measurements are taken.

Based on client's objectives and concerns, we then proceed with drafting our first design proposal that is presented along with various sketches and 3D renderings.

Upon agreement on the general concept, we develop our schemes accordingly and start discussing specific design details, showing the client samples of materials, fabrics, lighting, and accessories...

Once all the finishes have been decided, execution phase can start. To keep project on time and budget, each assignment is subject to detailed costing and quality control. A comprehensive bill of quantities is prepared that covers every aspect of the project down to the smallest item, enabling precise budgeting and accurate cash-flow management while work is in progress.





SERVICES

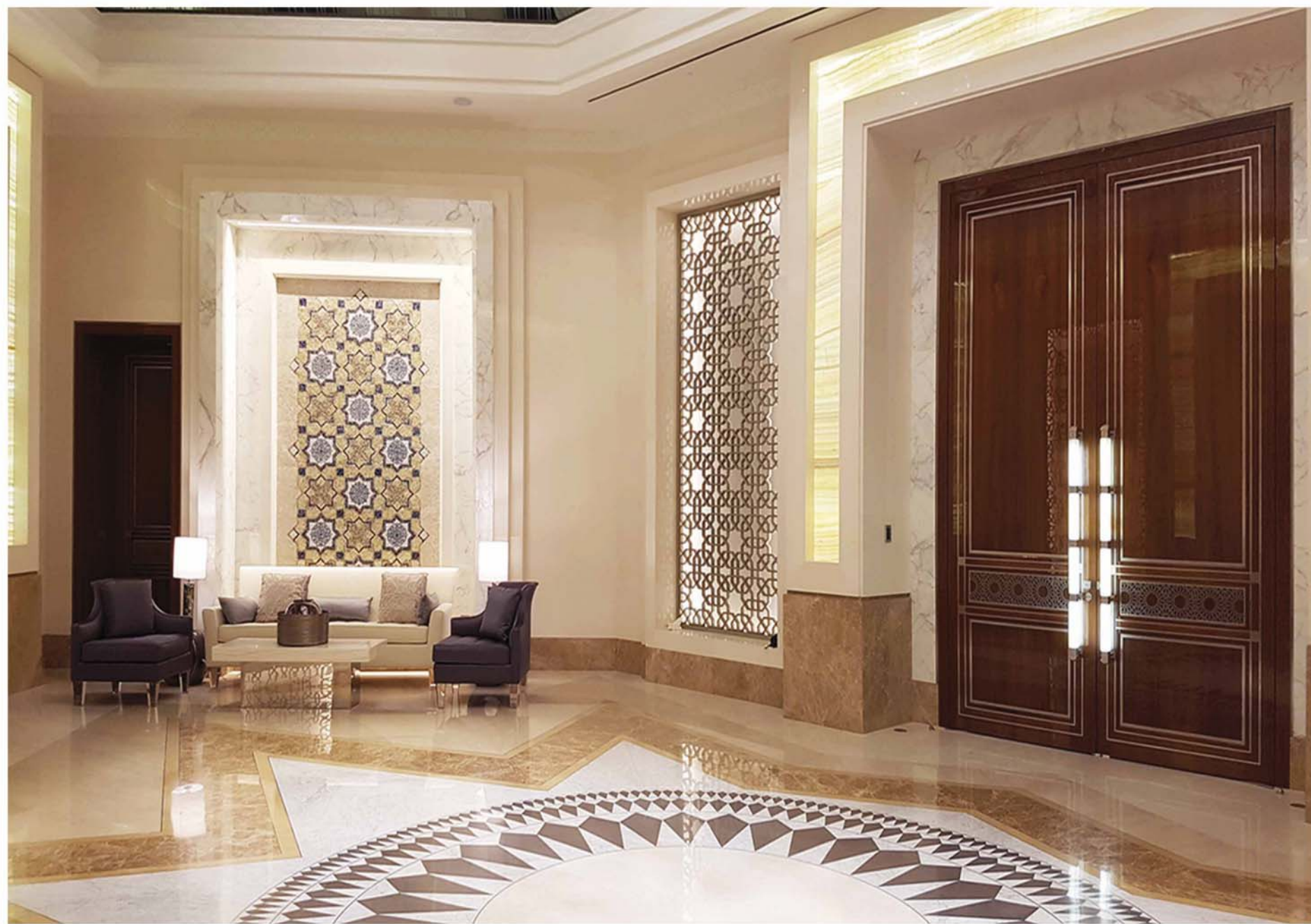
SPACE DISCOVERY AND MANAGEMENT



SPAZZIO OFFICE | ABHU DHABI

Although we focus on luxury homes, we also work on commercial projects such as restaurants, hotels, and corporate environments. When planning office spaces, we start by familiarizing ourselves with the company's organizational structure and operational requirements. This knowledge allows us to devise office plans which maximize efficiency and productivity. Spazio's corporate office in Abu Dhabi exemplifies this pragmatic approach, with uncluttered working zones that encourage interaction and creativity.

The craft of space does not take place in a vacuum. Space is about people, the people who use it and the people who design it. As such, our management process makes sure that the completed project reflects the client's objectives and desires.



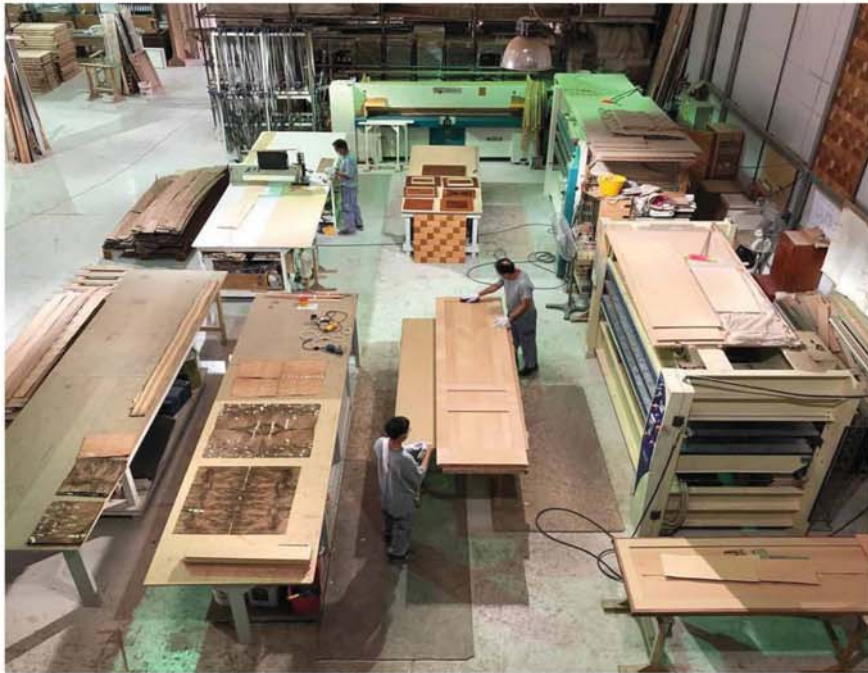
FACTORIES

CRAFTSMANSHIP AT WORK



Fine marble, granite, mosaics, and stone are quarried and polished to the specification for the appropriate project, mastered by the sister companies or partners to meet the interior design requirements laid down by our designers and tailor made to up to finest details and need of the client.





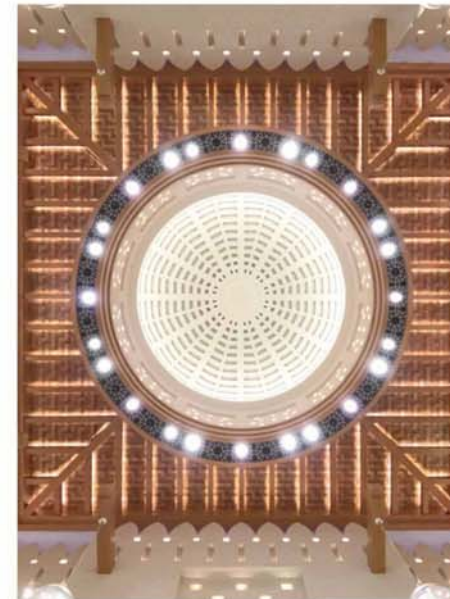
WORKSHOPS

CRAFTSMANSHIP AT WORK



Similarly, rare timber is dressed in our own carpentry workshops to create warmth and color. Additional workshop specializes in textiles, gypsum moldings and paintwork. There, rich fabrics, - blending with luxurious hand-tufted carpets - are tailored for drapes and upholstery, ornate ceiling decorations are cast and finished and complex paint renderings are prepared and executed.

This integrated interior environment is complemented by a careful choice of furnishings that set the mood along with glittering chandeliers, light fittings, and accessories that reflect each client's individual taste.



We are also responsible for supervision and coordination, ensuring that every phase of the project is carried out exactly to specification and, equally important, on time.



“A LA CARTE” INTERVENTIONS



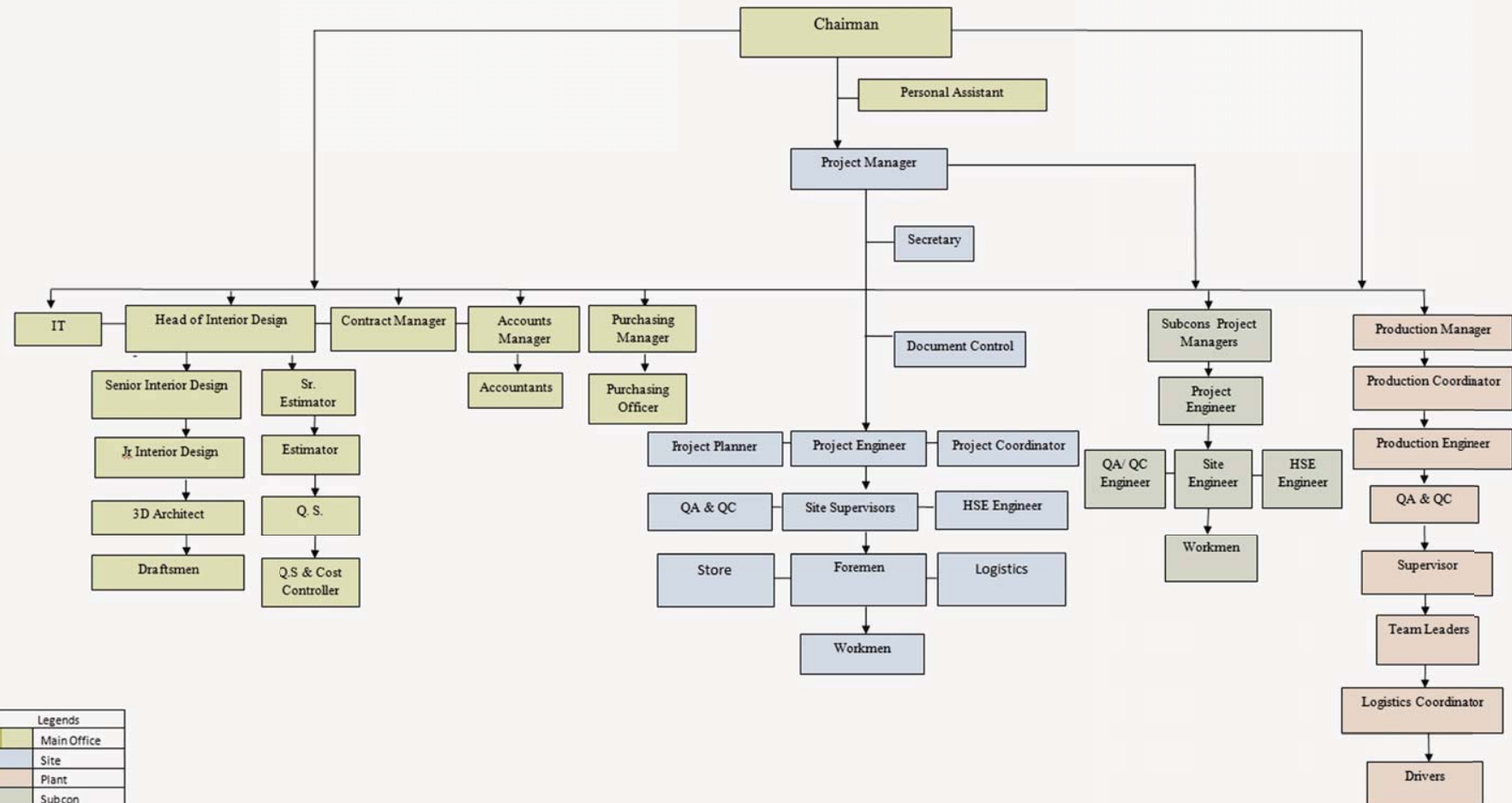
In many instances, our workshops undertake specialist applications such as creating unique ceiling moldings, custom designed woodwork, and decorative paint applications.

As a result, the company has built a reputation for being able to deliver complex assignments at very short notice, matching originality of design with speed and quality of execution – without compromising budgets.



ORGANIZATION CHARTS

GENERAL



COMPANY RESOURCES

COMPANY RESOURCES

HUMAN RESOURCES

STAFF	Qty
Managers	10
Engineers	11
Architects	10
Designers	4
Draftsmen	24
IT	2
Procurement	3
Supervisors	4
Foremen	3
Finance	3
Administrative	10
QS	2
Safety Officers	4
SUB TOTAL	90

COMPANY RESOURCES

HUMAN RESOURCES

MANUAL STAFF	Qty
Carpenter	51
Carver	6
Veneer	5
CNC Operator	3
Painters & Sanders	52
Upholsterer	10
Helpers	7
Gypsum Workers	69
Store Keeper	4
Plumper	7
Electrician	7
Driver	9
Masons	70
SUB TOTAL	300

COMPANY RESOURCES

AUTOMATED EQUIPMENTS (SPAZIO OWNERSHIP)

No.	Equipment Type & Model	Section	Conditions	Availability
1	Weeke CNC 3D Machine (BHP 200/Vantage 512)	Milling &Assembling	Less than 1 year	1 No
2	Weeke CNC 3D Machine (BHP 200/Vantage 512)	Milling &Assembling	New Machine	1 No
3	Edge banding machine - Ambition 1220CF	Milling &Assembling	Less than 1 year	1 No
4	Edge banding machine	Milling &Assembling	New Machine	1 No
5	Sanding Belt machine S1 213	Workshop	Less than 1 year	2 No
6	OMC-Hot Press Machine	Veneer	1 year or more	1 No
7	OMC-Hot Press Machine	Veneer	New Machine	1 No
8	Veneer Cutting Machine MQ2031B	Veneer	Less than 1 year	1 No
9	Packing Machine	Packing	New Machine	1 No

COMPANY RESOURCES

NON-AUTOMATED EQUIPMENTS (SPAZIO OWNERSHIP)

No.	Equipment Type & Model	Section	Conditions	Availability
1	Veneer Stitching Machine	Veneer	Less than 1 year	1 No
2	Band Saw Machine	Milling &Assembling	2 years or more	2 Nos
3	SCM- Planer Machine	Milling &Assembling	2 years or more	2 Nos
4	SCM- Panel Saw	Milling &Assembling	2 years or more	2 Nos
5	Compressor	Milling &Assembling	2 years or more	2 Nos
6	Stand Drill	Milling &Assembling	2 years or more	1 Nos
7	SCM-Spindle Moulder Machine	Milling &Assembling	2 years or more	2 Nos
8	Dust Collector	Milling &Assembling	2 years or more	10 Nos
9	Door Lock Router	Milling &Assembling	2 years or more	1 No
10	Router 900E-technomax	Milling &Assembling	Less than 1 year	1 No
11	Circular Saw, sliding table 320cm, 35-3200	Milling &Assembling	Less than 1 year	1 No
12	Router Multi scolpitore 8 heads	Milling &Assembling	Less than 1 year	1 No
13	Top Coat spray painting booth STC SB 700F	Paint Section	Less than 1 year	1 No
14	Top Coat spray painting booth	Paint Section	New Machine	1 No
15	Drier Spary Boot	Paint Section	1 year or more	1 No
16	Air Dryer ACT 23 with filters & timer controlled	Paint Section	Less than 1 year	2 Nos
17	Sharpening Machine	Maintenance	1 year or more	1 No
18	Welding Machine	Maintenance	1 year or more	1 No
19	Juki Stitching Machine	Upholstery	1 year or more	3 Nos
20	Singer Edging Machine	Upholstery	1 year or more	1 No
21	Mortizer	Milling &Assembling	New Machine	1 No
22	Drawer Maker	Milling &Assembling	New Machine	1 No

| PORTFOLIO |

PROJECTS

#	Project ID	Project Details	Client	Area Sq.m	Commencment	Status
1	Wasl Tower	Dubai	Arabtec / Wasl Properties	Doors PKG	Dec-19	On Going
2	Private Villa - Al Maqtaa	Abu Dhabi	Private	4,123	Dec-19	On Going
3	Bateen Palace Maintenance	Abu Dhabi	Department of Presidential Affairs	7,500	Nov-19	On Going
4	Bateen Village Villa	Abu Dhabi	Yosh Interiors	3,122	Jul-19	On Going
5	Qasr Al Hosn - CFB	Abu Dhabi	Department of Culture & Tourism	37,000	Jan-18	On Going
6	Mussafah Palace Majlis	Abu Dhabi	Eclectic Interiors	900	Apr-19	Completed July 2019
7	Eclectic Interior Office	Abu Dhabi	Eclectic Interiors	670	Mar-19	Completed Nov 2019
8	Jumeirah Hotel - Saadiyat Library , Cigar Lounge & Sports Lounge	Abu Dhabi	Berios	2,533	Nov-18	Completed Dec 2019
9	Neom P-144	KSA- Sharma	Royal Prince Affairs	9,266	Apr-18	Completed April 2019
10	Al Ain Private Majlis	Al Ain	SGCC	2,500	Mar-18	Completed Sep2018
11						
12	Royal Suite - St Regis Saadiyat	Abu Dhabi	St Regis	400	Dec-17	Completed Jun 2018
13	Private Villa - Bateen Hial Co	Abu Dhabi	Hilal Co	3,000	Nov-17	Completed July 2019
14	VVIP Terminal Al Ain Airport	Al Ain	Ministry of Presidential Affairs	4,555	Aug-17	Completed Feb 2018
15	AutoChim Systems	Abu Dhabi	AutoChim	800	Mar-17	Completed Oct 2017
16	Al Hosn Conference Room	Abu Dhabi	Crown Prince Court	293	Sep-14	Completed Dec 2015
17	Presidential Palace Project Vice President Package	Abu Dhabi	Ministry of Presidential Affairs	7,250	Jul-13	Completed October 2016
18	Presidential Palace Project Crown Prince Package	Abu Dhabi	Ministry of Presidential Affairs	7,100	Jun-13	Completed April 2016
19	Villa Complex	Ghanadah	Department of Presidential Affairs	17,200	May-13	Completed March 2015
20	Swimming Pool Block	Ruwais	Department of Presidential Affairs	3,050	Feb-12	Completed August 2012

PROJECTS

21	VVIP Villa	Abu Al Abyad	Department of Presidential Affairs	3,500	Mar-11	Completed December 2011
22	Pool Villa	Qseewrah	Department of Presidential Affairs	2,500	Jun-10	Completed July 2011
23	Ramadan Majlis	Bateen Palace	Department of Presidential Affairs	1,500	Apr-10	Completed August 2010
24	Guard Accommodation	Five Individual Houses -Al Ain	Department of Presidential Affairs	3,750	May-09	Completed February 2010
25	Private Residential Complex	Qseewrah	Department of Presidential Affairs	7,500	May-09	Completed March 2010
26	Marwan Villa	Palm Island	VIP	1,200	May-09	Completed 2009
27	Medical Clinic	Al Bateen Palace	Department of Presidential Affairs	150	Jan-09	Completed March 2009
28	Private Villa	Al Wathba	Department of Presidential Affairs	700	Jan-09	Completed March 2009
29	VIP Conference Block	Al Bateen Palace	Department of Presidential Affairs	800	Jul-08	Completed August 2008
30	Block 3	VVIP Pool Villa	Department of Presidential Affairs	2,400	May-08	Completed August 2008
31	Private Office Abu Dhabi	Decoration and Office Furniture	Department of Presidential Affairs	3,500	Apr-08	Completed September 2008
32	Block 2	VIP Guest Villa	Department of Presidential Affairs	1,600	Feb-08	Completed May 2008
33	Block 4	Guest House	Department of Presidential Affairs	1,850	Jan-08	Completed April 2008
34	Al Nakheel Project	les & Marketing Floor	Nakheel	5,000	Jan-08	Completed 2008
35	Villa # 8	Al Bateen Palace	Department of Presidential Affairs	1,200	Dec-07	Completed February 2008
36	New Majilis	Al Bateen Palace	Department of Presidential Affairs	490	Nov-07	Completed March 2008
37	Block 1	Four Individual Guest Houses	Department of Presidential Affairs	1,550	Sep-07	Completed December 2007
38	Block 5	VIP New Majilis Extension	Department of Presidential Affairs	1,110	Aug-07	Completed November 2007
39	Left & Right Majilis & Dining	Al Bateen Palace	Department of Presidential Affairs	1,700	Jan-07	Completed April 2007
40	Al Wathba Old Camel Race	Majilis	Department of Presidential Affairs	1,500	Oct-06	Completed January 2007

NOTE: ALL PHOTOS ARE CONFIDENTIAL AND WILL BE SHOWN IN PRIVATE UP ON REQUEST.









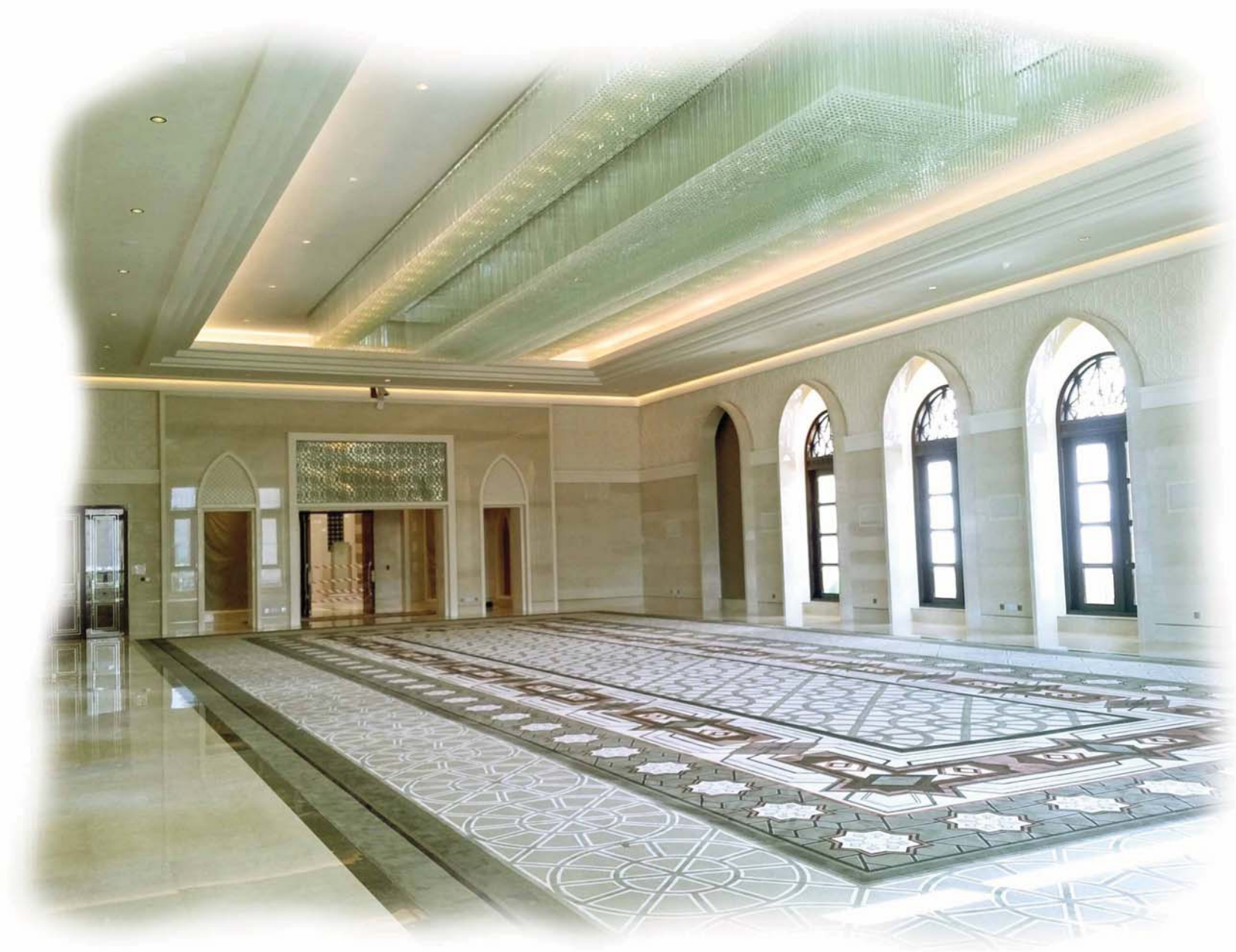


















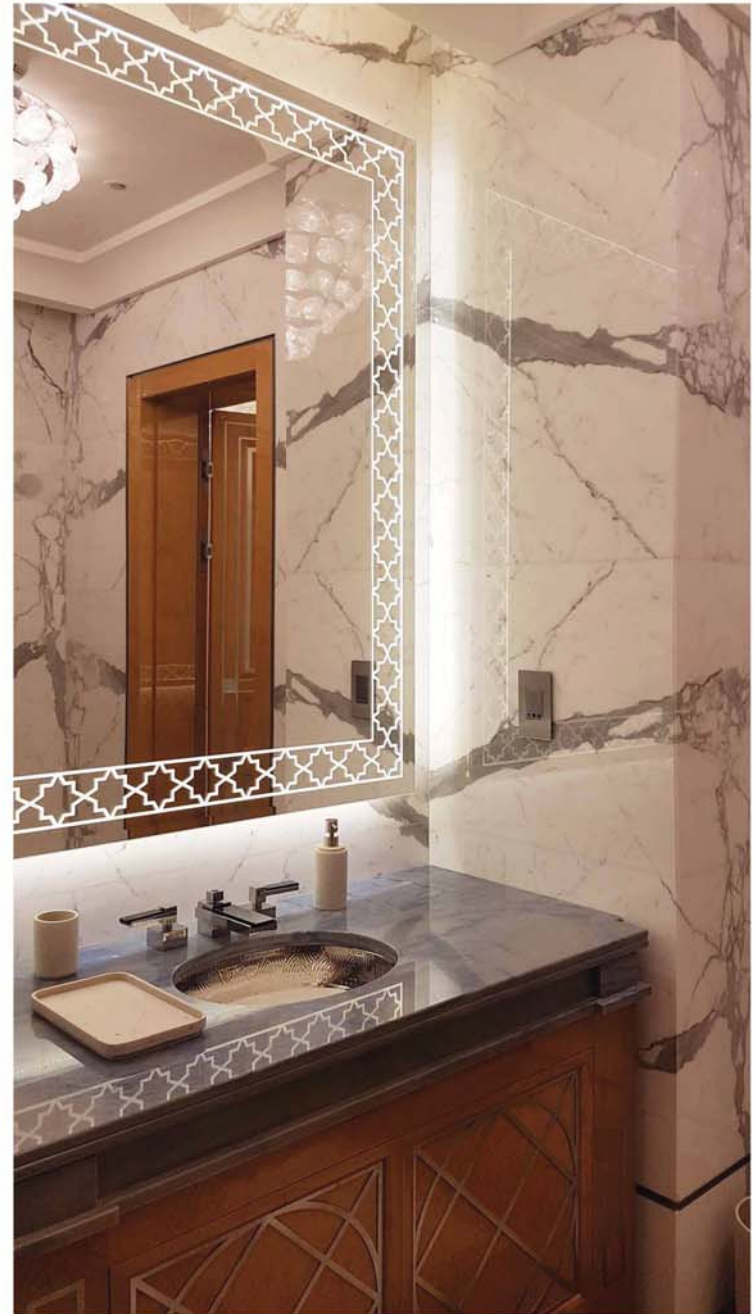


























HEALTH & SAFETY

HEALTH & SAFETY

Employer Responsibilities

- The employer is responsible for ensuring the health and safety of his workers.
- Correct any workplace conditions that are hazardous to the health and safety of your workers.
- Informing the workers about any remaining hazards.
- Ensuring that all workers know and comply with their rights and responsibilities under the law of the UAE.
- Provide and maintain protective devices, equipment, and clothing, and ensure that workers use them.
- Consult and cooperate with safety representative and ensure training takes place .
- Establish an occupational health and safety program whether formal or informal.

Factory Manager Responsibilities

- Ensure the health and safety of workers under his direct supervision.
- Know the requirements of the Regulation that apply to the work he is supervising.
- Plan and coordinate all trainings that take place to ensure the safety of his workers.
- Make sure all workers understand and practice all safety measures.

Workers Responsibilities

- Take reasonable care to protect their health and safety and that of other persons who may be affected by their actions.
- Comply with the Regulation and other legal requirements.
- Follow established safe work procedures.
- Use any required personal protective equipment.



HEALTH & SAFETY

Spazio factory is a safe working environment that comprises with all the health and safety rules and regulations.

Typical Orientation & Training Topics

Worker rights and responsibilities:

- Following the Regulation and other health and safety rules.
- Using PPE when required.
- Right to refuse unsafe work.

Falls from elevation(including ladder safety)

- Fall protection system.
 - Fall protection procedures.
 - Proper use of fall protection equipment
- Ladder safety.
- Inspection and maintenance of ladders and fall protection equipment.

Lifting and moving objects or people (strains and sprains)

- Demonstrate safe lifting technique.
- Use of specialized equipment for lifting or moving materials or people.
- Storage priorities (heavier items at lower heights and lighter items higher up).

Confined spaces (painting rooms, paintings or drying booths)

- Location of any confined spaces in the workplace, and the hazards they pose.
- Who may or may not enter a confined space.
- Required procedures for entering a confined space.

Personal protective equipment (PPE)

- When and how to use specific PPE.
- Where to find PPE.
- Limitations of protection.
- Storage, maintenance, and inspection.

First aid and emergency procedures

- Names and locations of first aid attendants.
- Locations of first aid kits.
- Locations of fire exits.
- Locations of fire extinguishers and how to use them.



CERTIFICATES

for

QUALITY MANAGEMENT SYSTEM & MANUFACTURING FIRE RATED DOORS



CERTIFICATE OF REGISTRATION

This is to certify that

SPAZIO DESIGN & BUILD INTERNATIONAL S.A.L.
- ABU DHABI
P.O. Box 127572
P Floor
Bin Butti Building
Liwa Street
Abu Dhabi
United Arab Emirates

has been audited and found to meet the requirements of standard
ISO 9001:2015 Quality Management System

Scope of certification

Design and Build for Interior Decoration

Karen Prendergast
Divisional Director - Certification
BM TRADA

Issuing Office: Warringtonfire Testing and Certification Limited t/a BM TRADA, Chiltern House, Stocking Lane, High Wycombe, Buckinghamshire, HP14 4ND, UK
Registered Office: 10 Lower Grosvenor Place, London, United Kingdom, SW1W 0EN Reg.No. 11371436

This certificate remains the property of BM TRADA. This certificate and all copies or reproductions of the certificate shall be returned to BM TRADA or destroyed if requested. Further clarification regarding the scope of this certificate and verification of the certificate is available through BM TRADA or at the above address or at www.bmtrada.com/certified-companies/check-a-certificate

The use of the UKAS accreditation mark indicates accreditation in respect of those activities covered by the accreditation certification number 012. For further information on bmtrada activities covered by UKAS accreditation please go to: <https://www.ukas.com/search-accredited-organisations>

Certificate number: 9889

Issue number: 2019-01

Certificate start date: 11 September 2019

Certificate expiry date: 10 September 2022

Date of initial certification: 11 September 2013



CERTIFICATE OF REGISTRATION

This is to certify that

Spazio Furniture & Decoration Factory L.L.C

P.O.Box 127572
Musaffah M40, Plot 96, Warehouse no.1
Abu Dhabi
United Arab Emirates

Meets the requirements of the BM TRADA Q-Mark International Fire Door Manufacture scheme to STD 096 - Issue 3 - 01/12/2015 which only operates in Bahrain, Egypt, Iraq, Jordan, Kuwait, Lebanon, Libya, Oman, Qatar, Saudi Arabia and The United Arab Emirates for the products on the attached schedule

Karen Prendergast
Divisional Director - Certification
BM TRADA

Certificate Number

730

Date of Initial Certification

18 December 2013

Date of last issue

28 December 2019

Date of Expiry

17 December 2022

Warringtonfire Testing and Certification Limited t/a BM TRADA, Chiltern House, Stocking Lane, High Wycombe, Buckinghamshire, HP14 4ND, UK
Registered Office: Warringtonfire Testing and Certification Limited, 10 Lower Grosvenor Place, London, SW1W 0EN, UK.
Reg No. 11371436.

This certificate remains the property of Warringtonfire Testing and Certification Limited. This certificate and all copies or reproductions of the certificate shall be returned to Warringtonfire Testing and Certification Limited or destroyed if requested. Further clarification regarding the scope of this certificate and verification of the certificate is available through BM TRADA or at the above address or at www.bmtrada.com

S P A Z I O

DESIGN & BUILD INTERNATIONAL S.A.L - ABU DHABI

P.O.Box: 127572 Abu Dhabi - UAE

Tel: +971 2 626 8383 - Fax: +971 2 626 8484 - Email: info@spaziodb.com

www.spaziodb.com